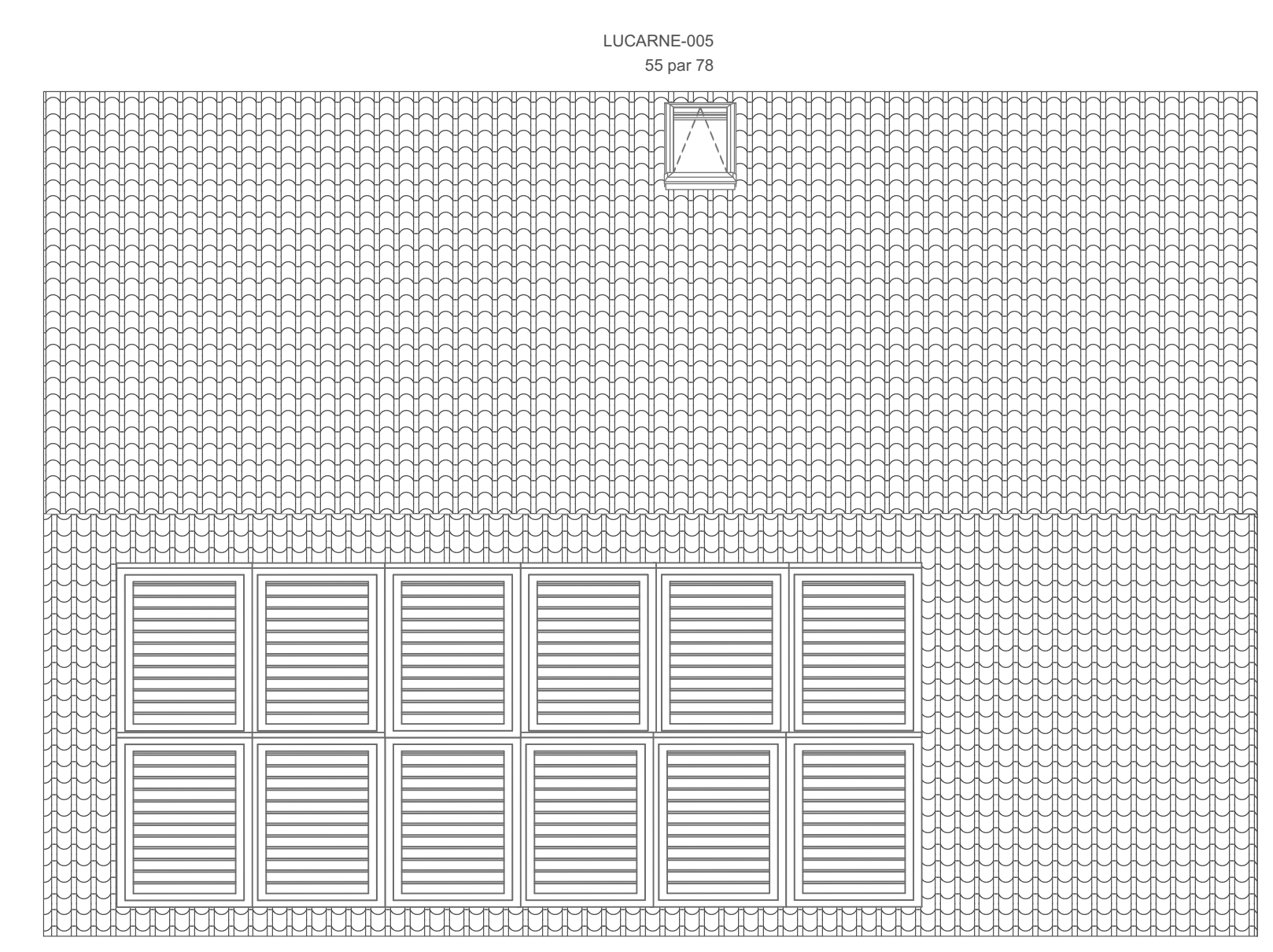
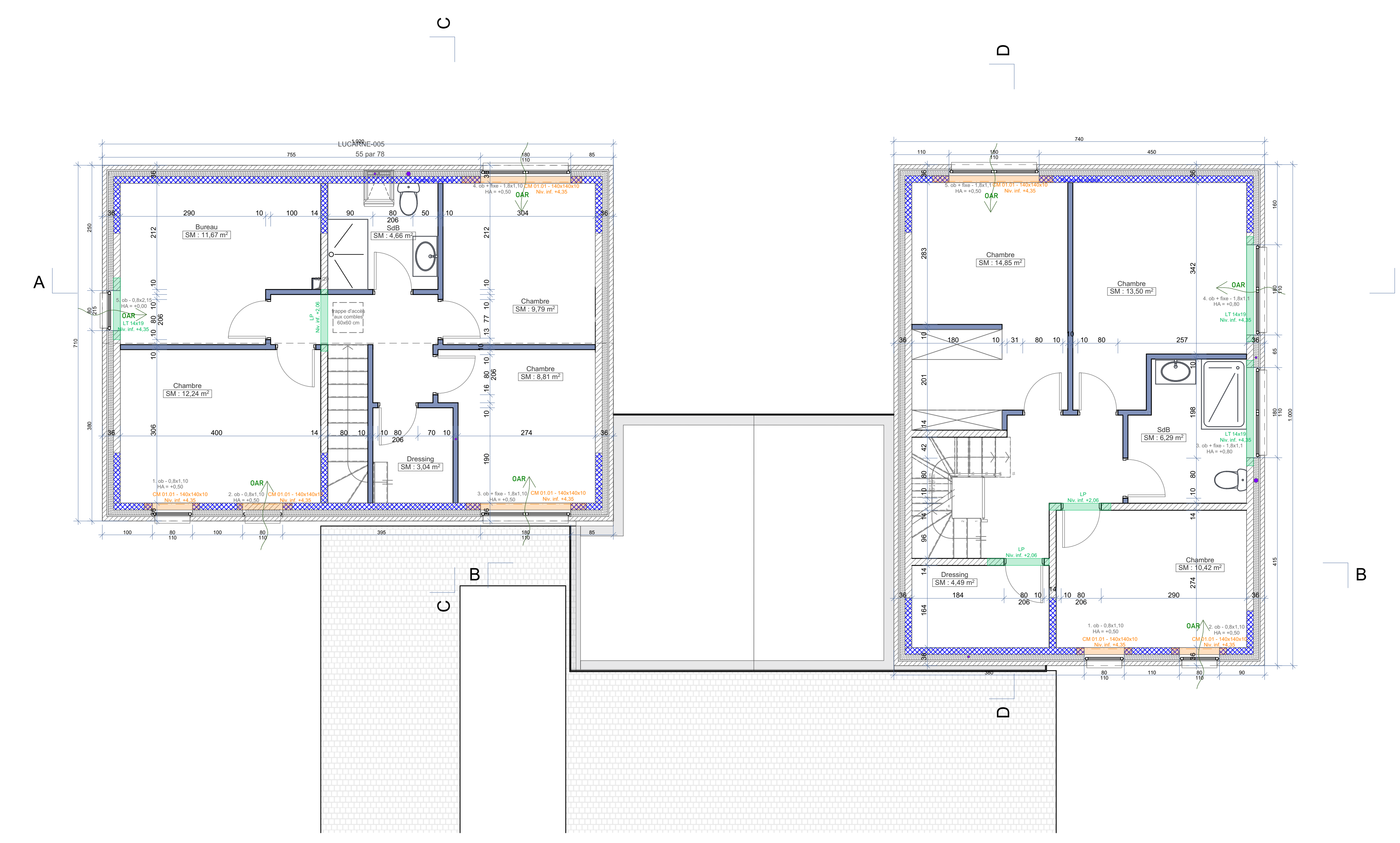
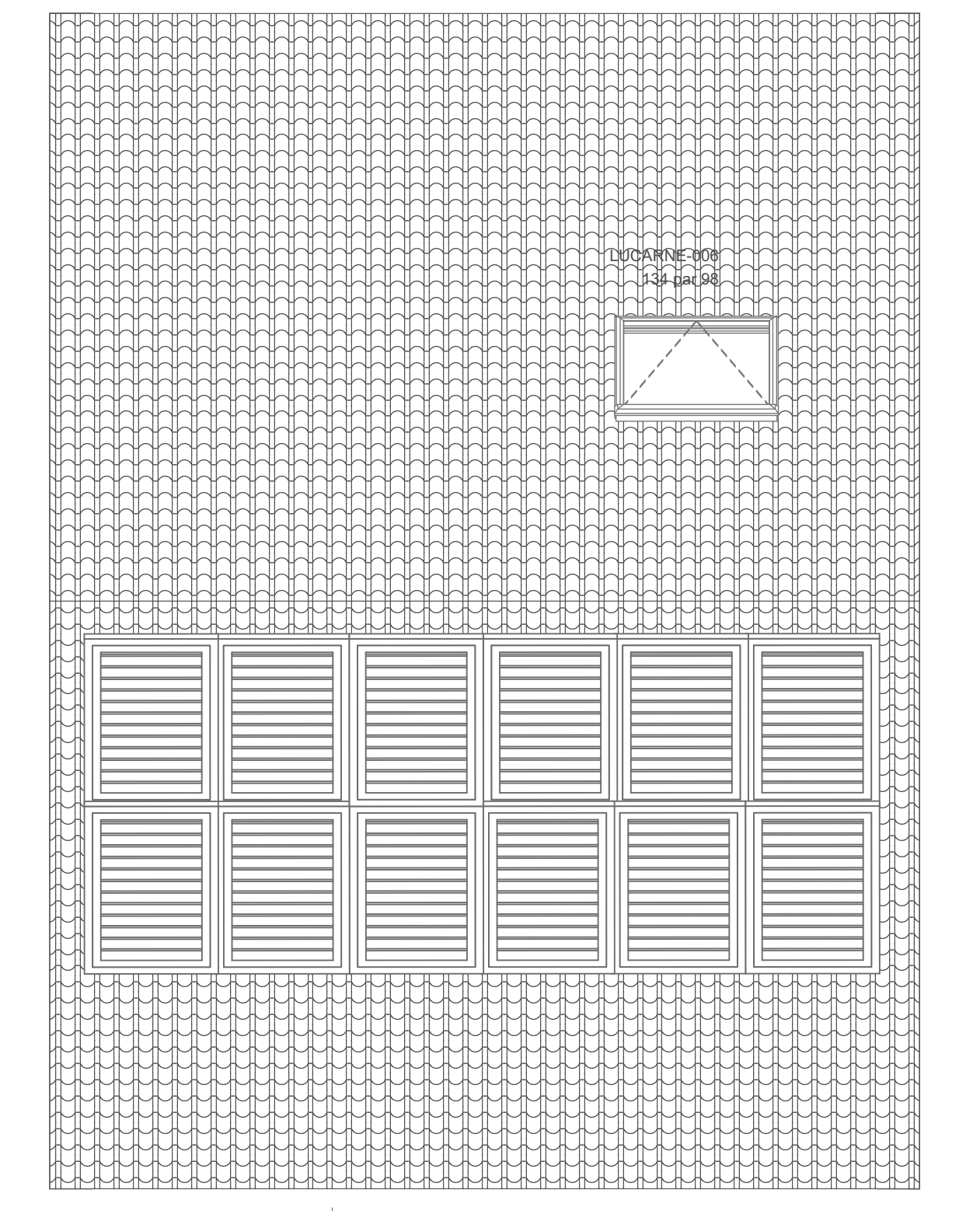


EXE. Rez-de-chaussée 1:50

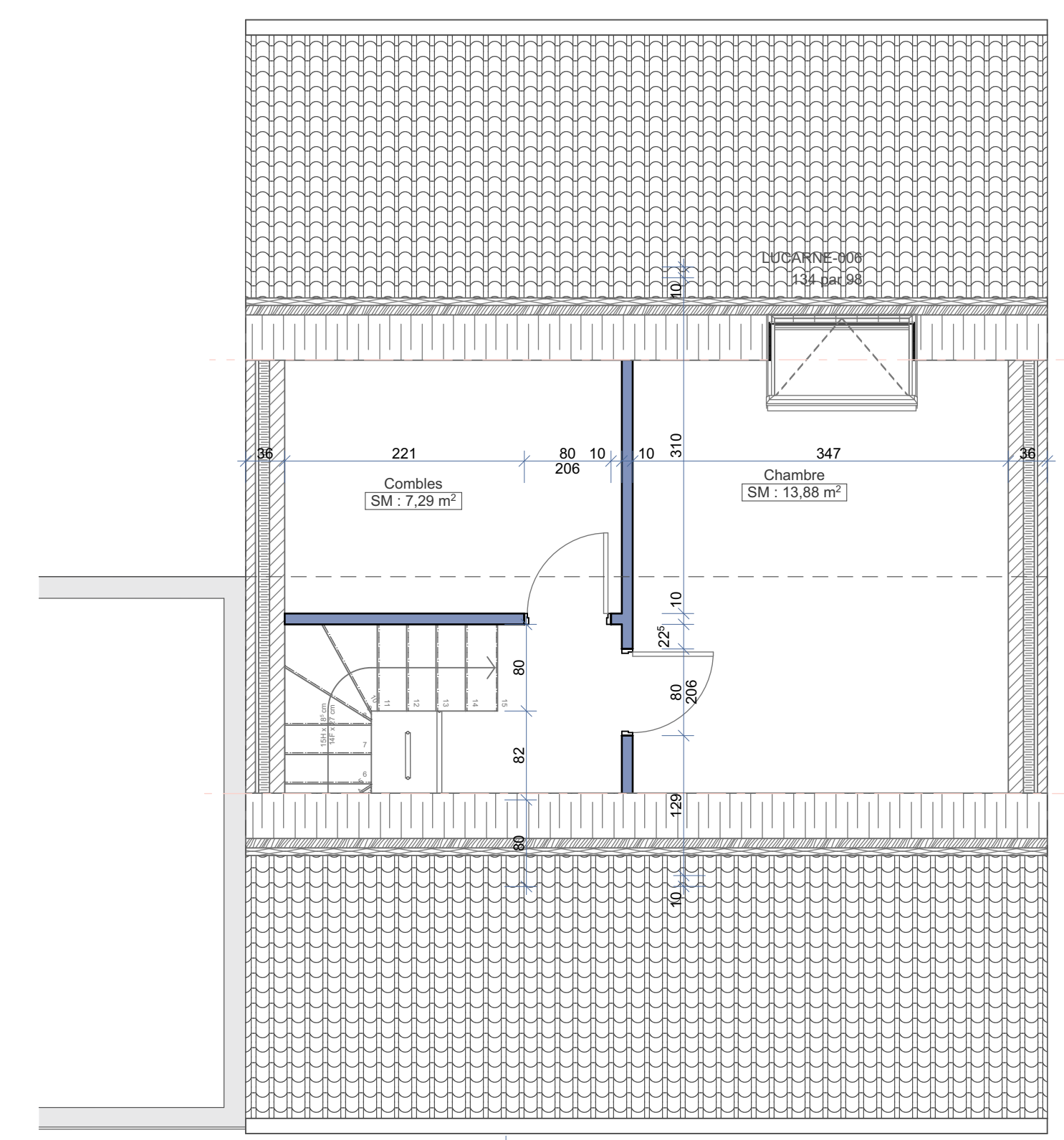


B
C



EXE. 1er étage 1:50

EXE. Toiture 1:50

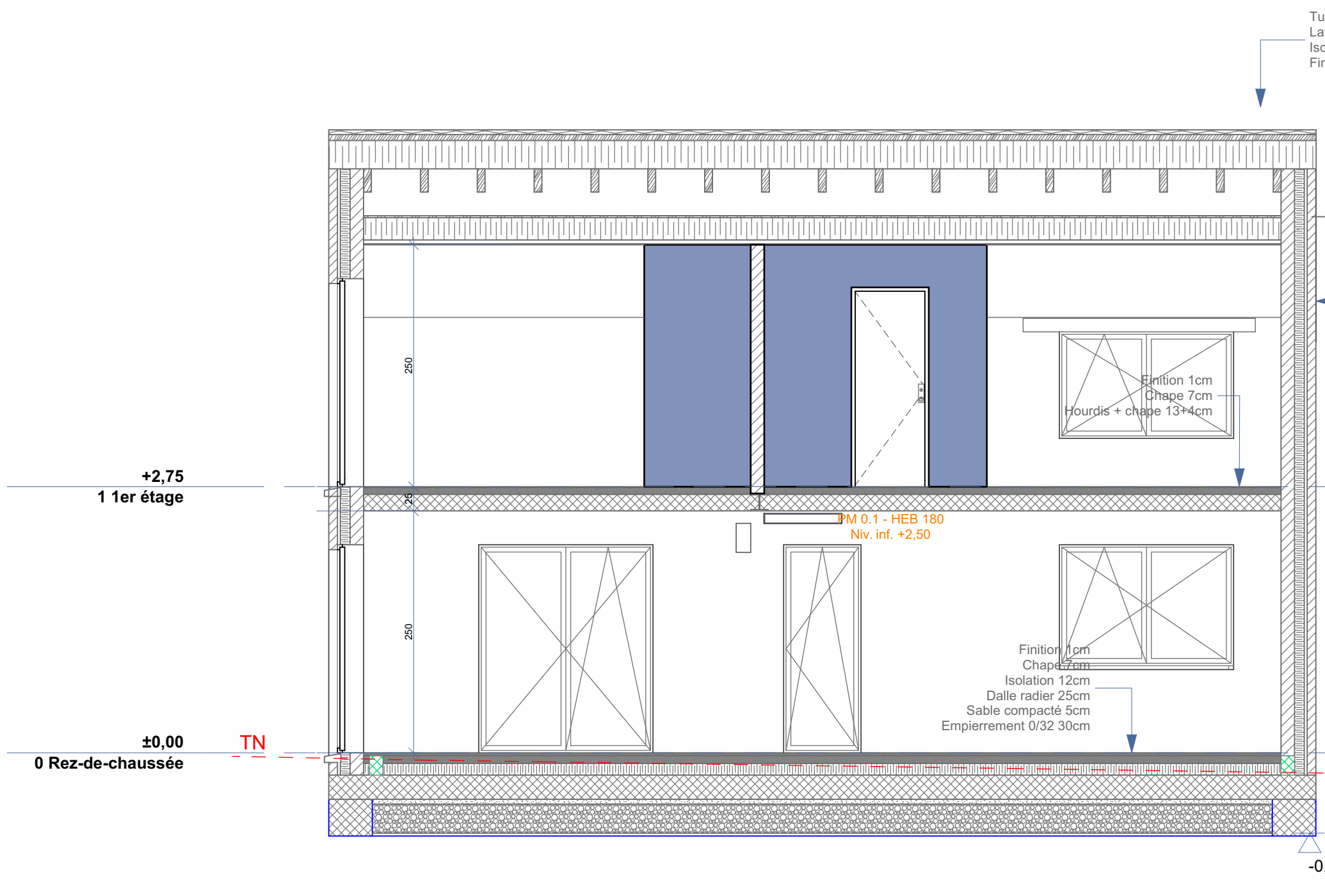


A
B



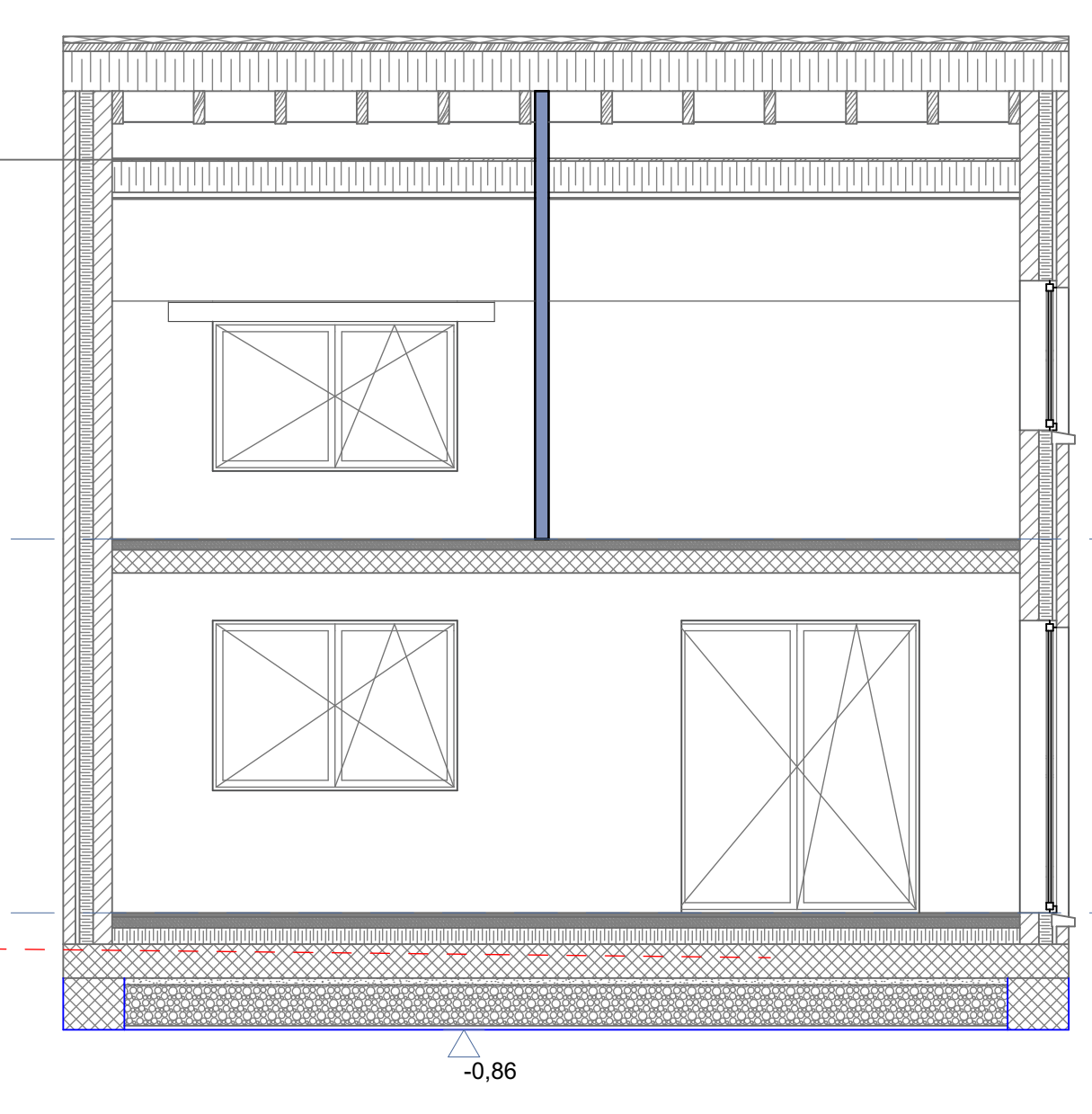
B
C

EXE. 2ème étage 1:50



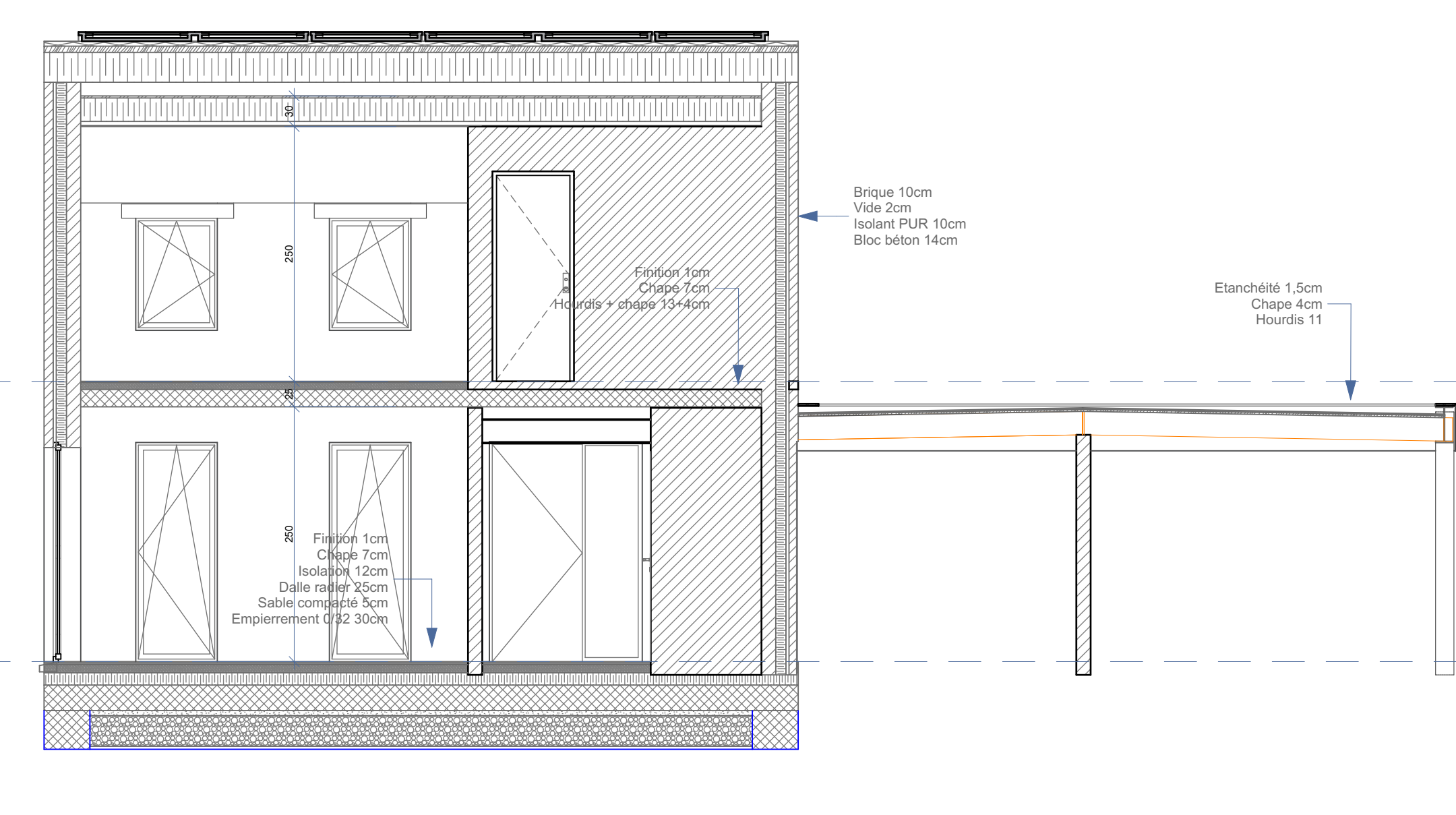
Coupe AA

1:50



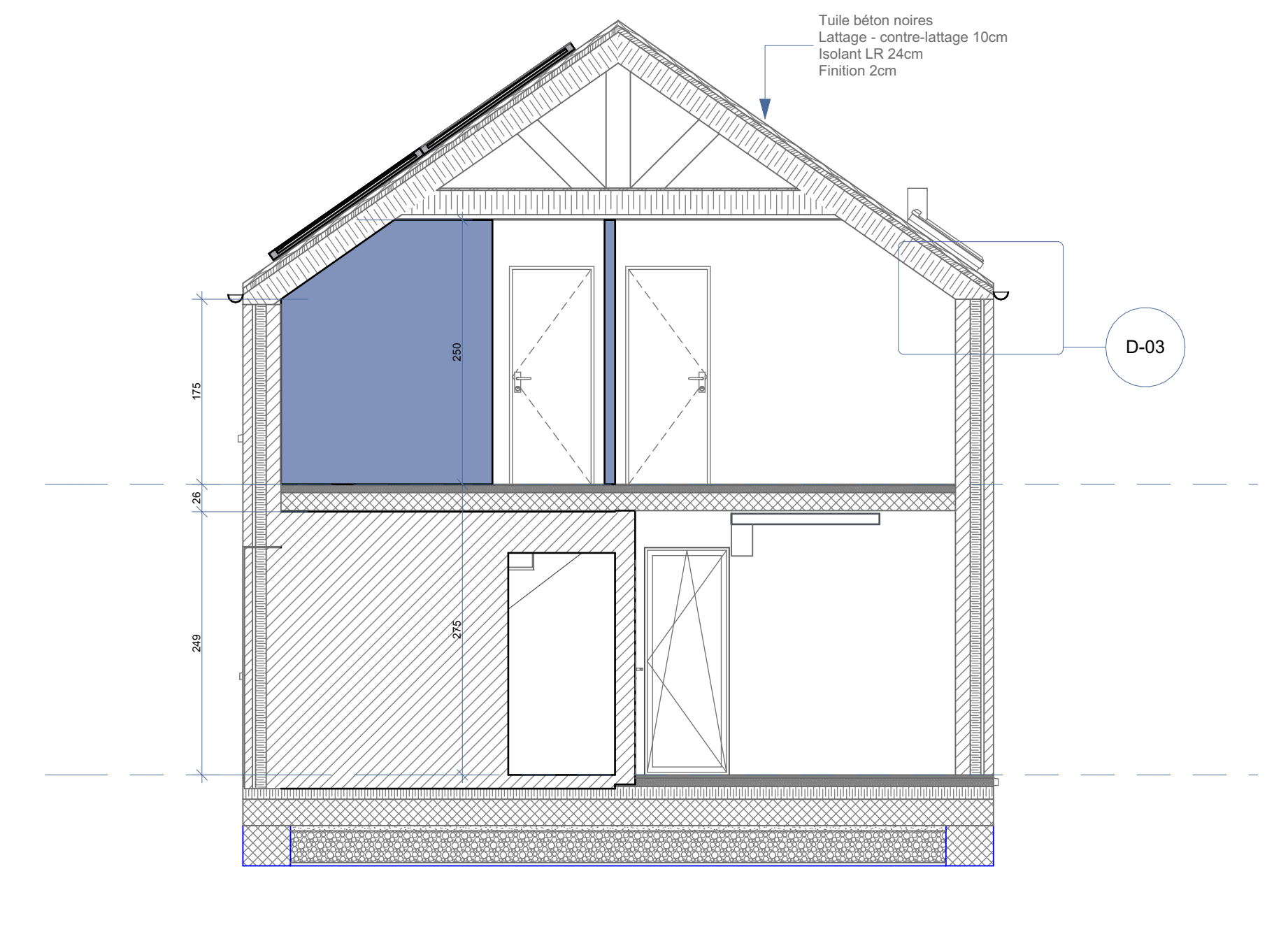
Coupe BB

1:50



Coupe CC

1:50



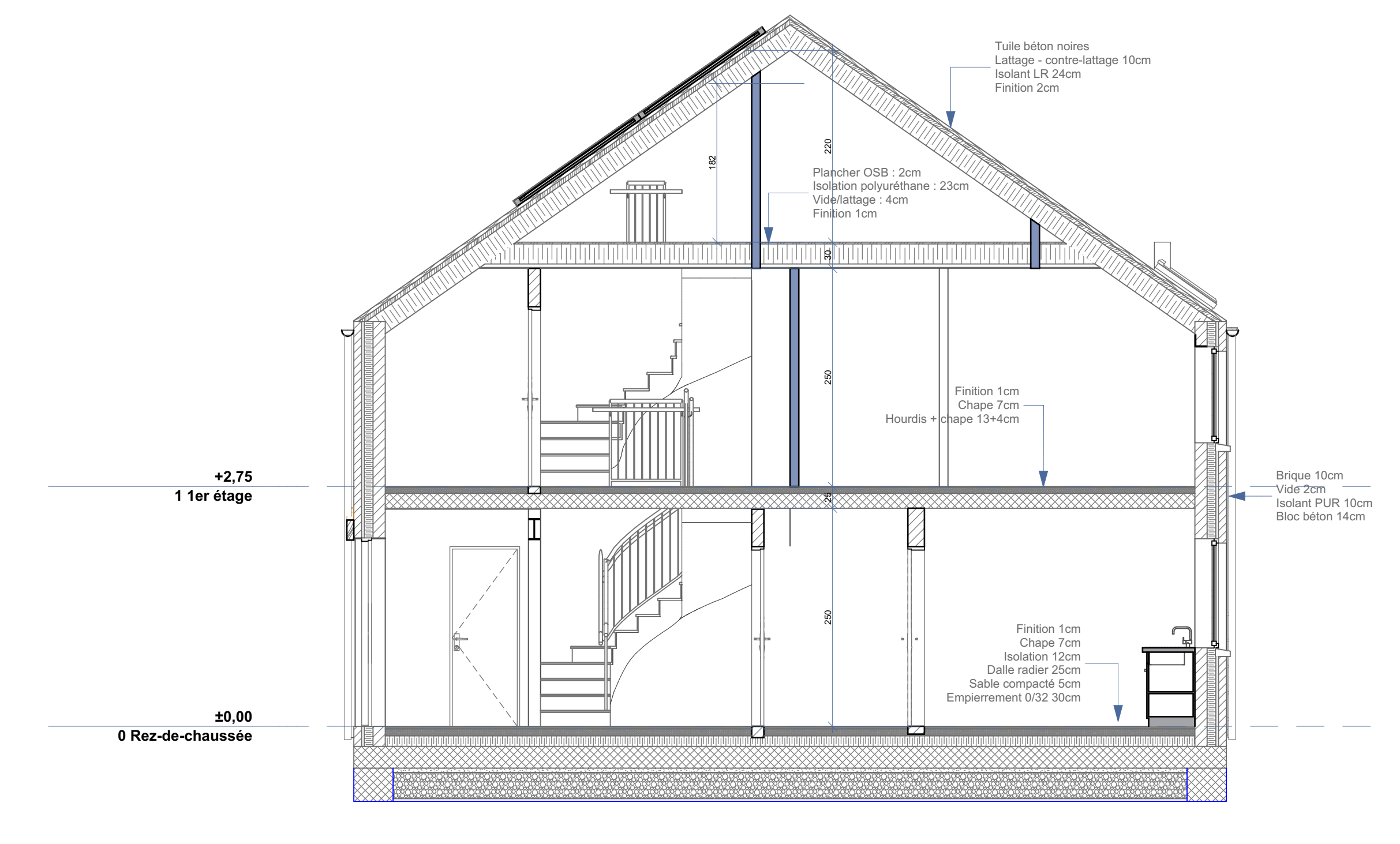
Façade avant

1:50



Façade Est

1:50



Coupe DD

1:50



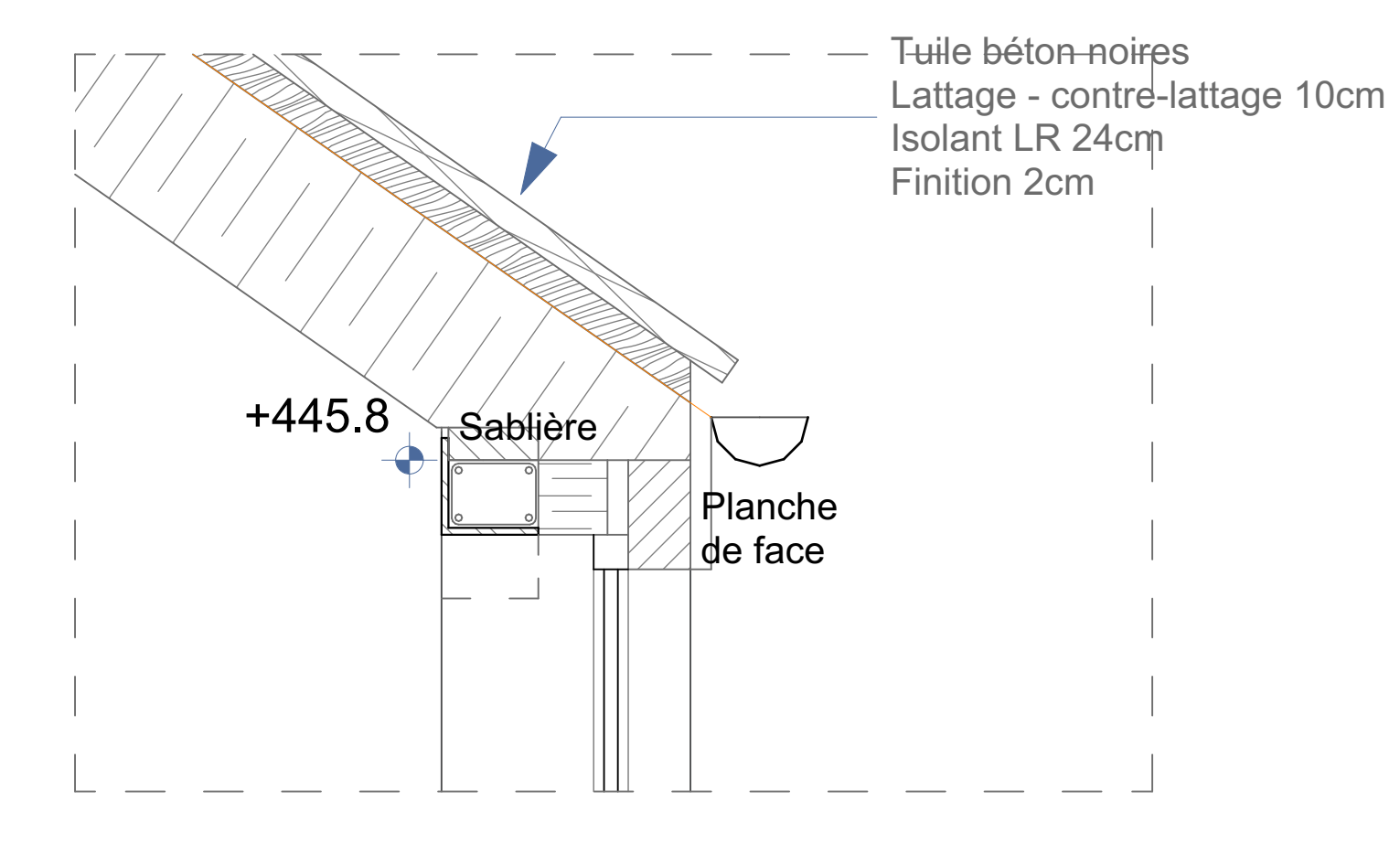
Façade arrière

1:50



Façade Ouest

1:50



D-03

raccord mur-toiture

1:10,00

- Légende :**
- 1 - Parement en brique RAL Salvia
 - 2 - Couverture en tuile béton Sneldek noire
 - 3 - Appui de fenêtre/porte en pierre bleue
 - 4 - Menuiserie extérieure de teinte grise foncée
 - 5 - parement en brique brune
 - 6 - Gouttière et descente d'eau en zinc gris foncé
 - 7 - Panneaux photovoltaïques
 - 8 - Gravier
 - 9 - Herbe

