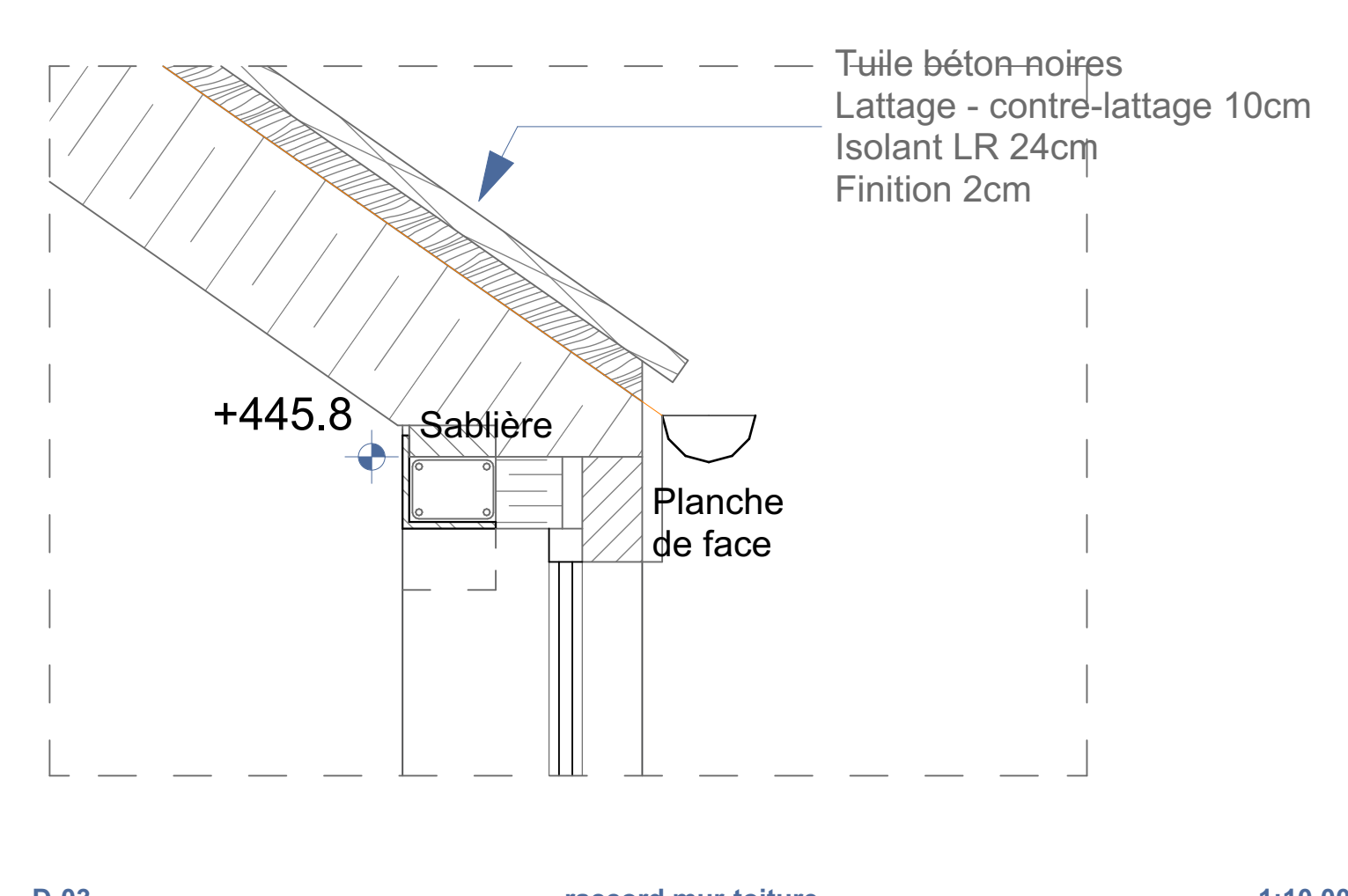
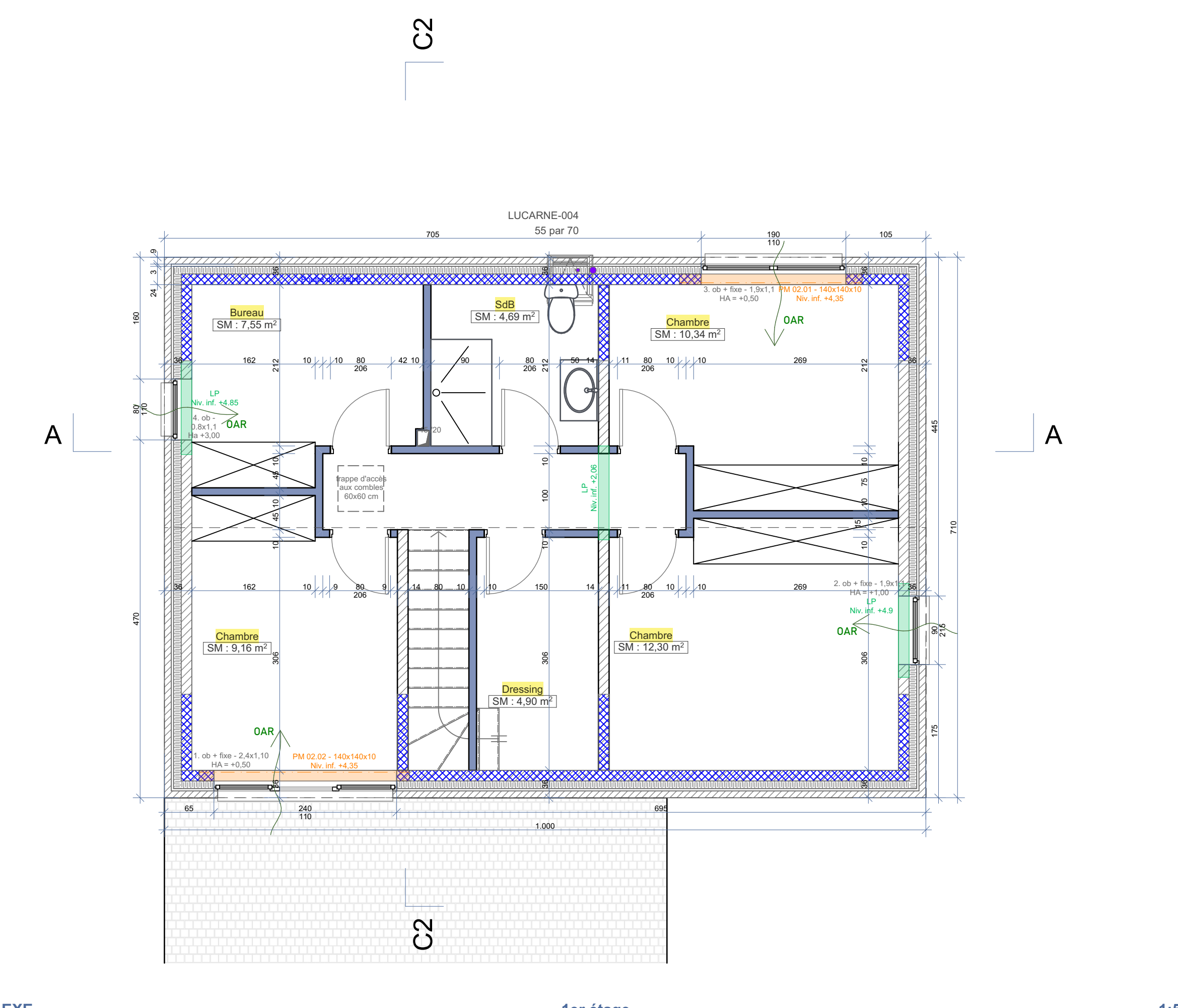
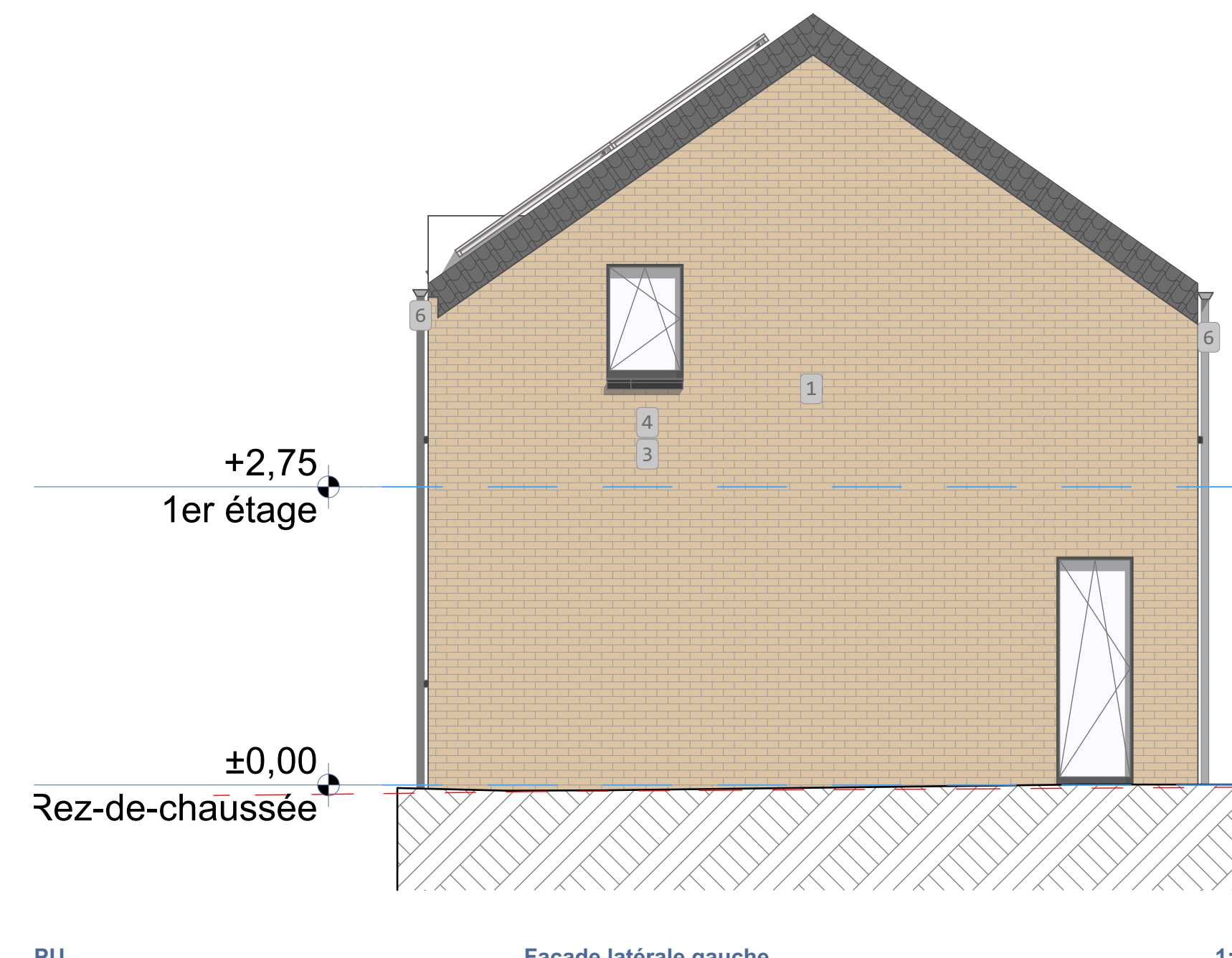
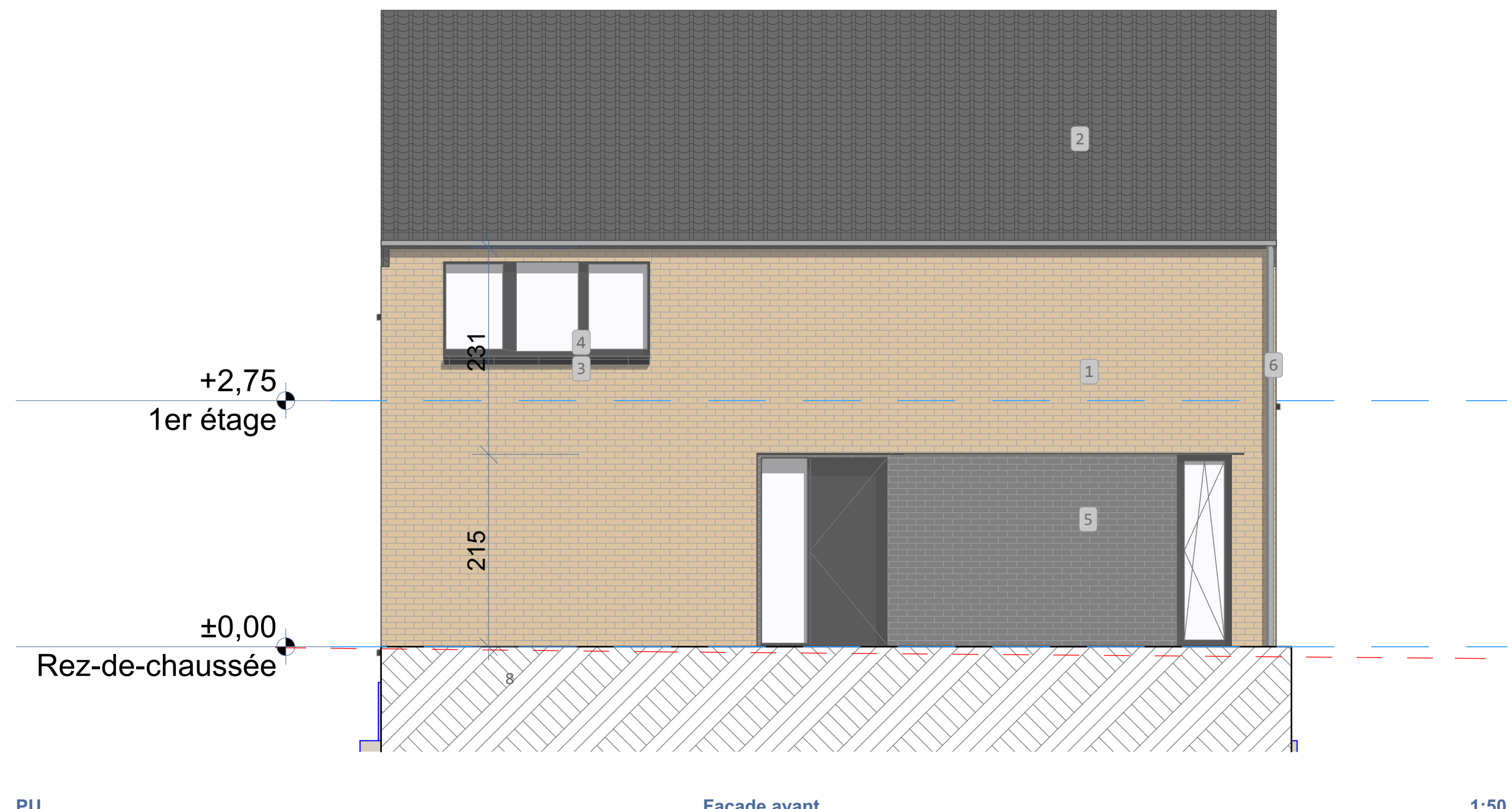
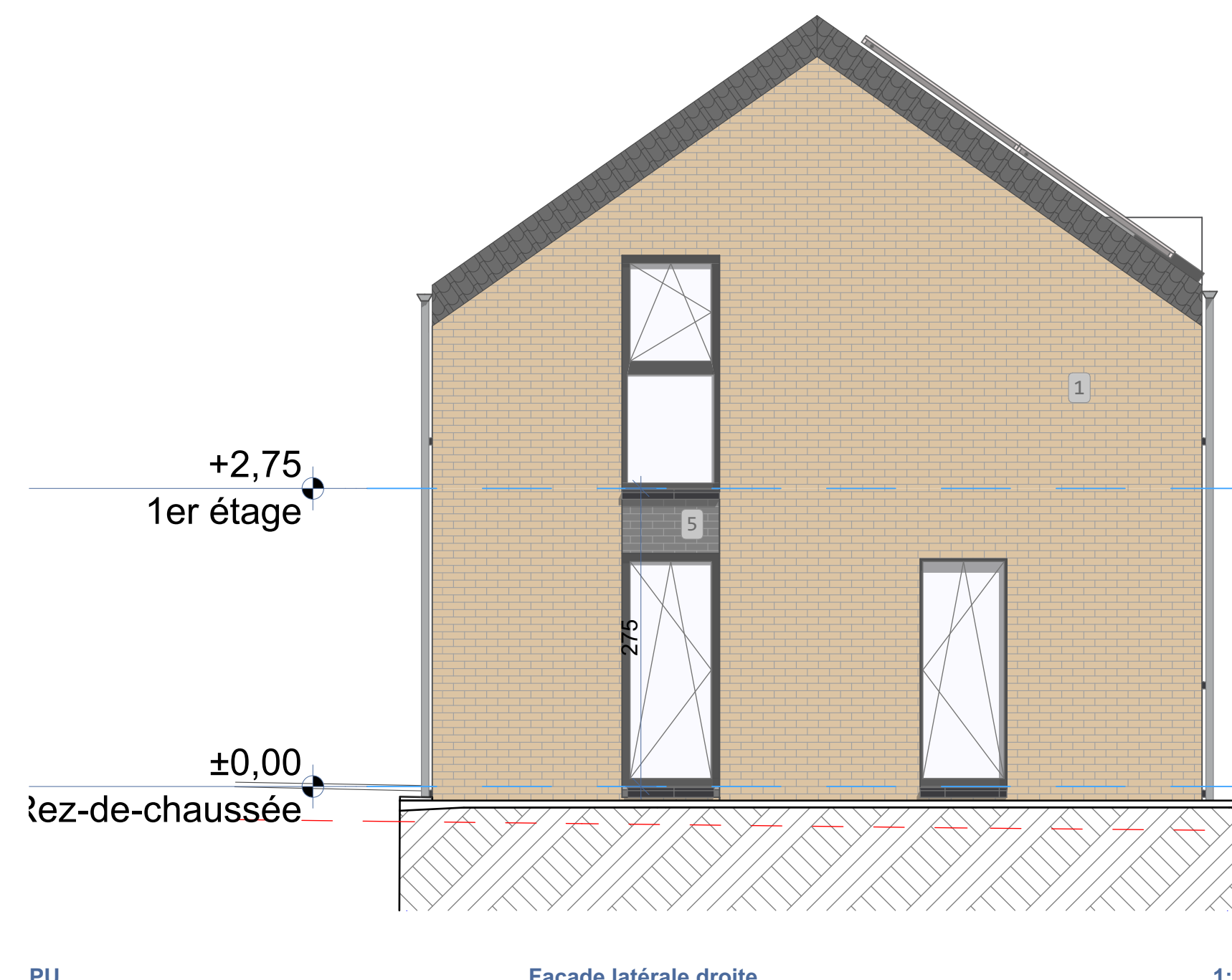
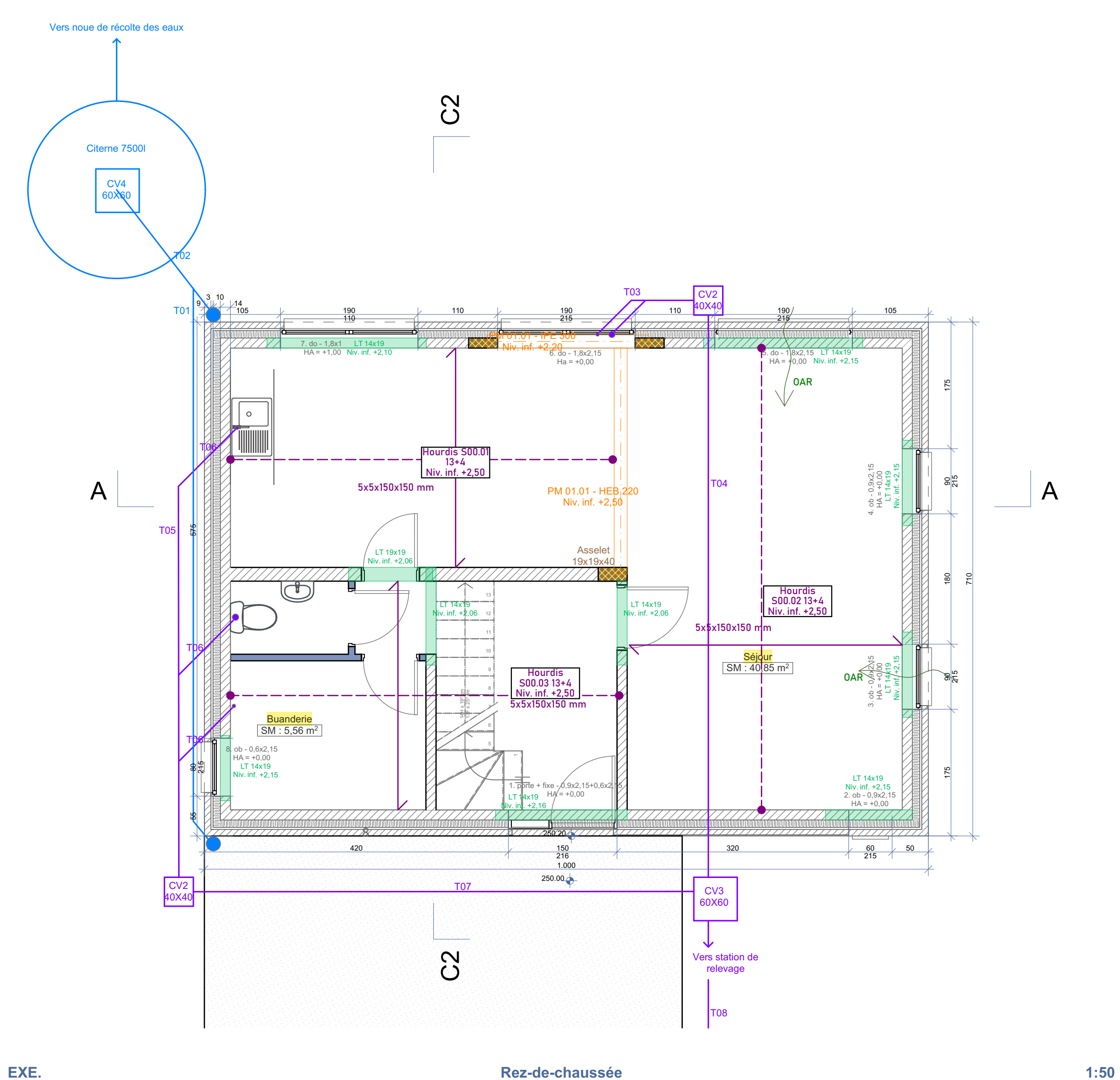
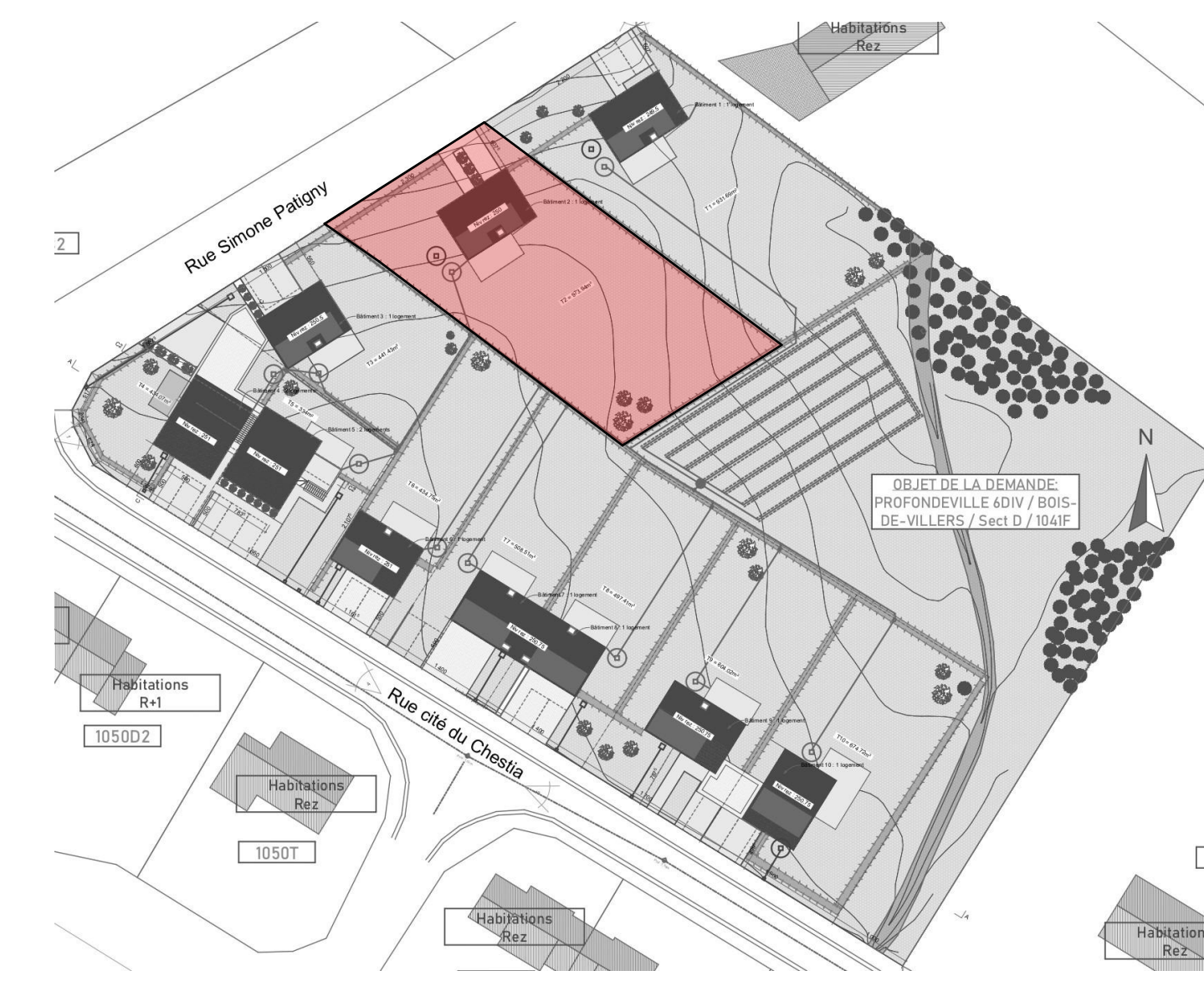
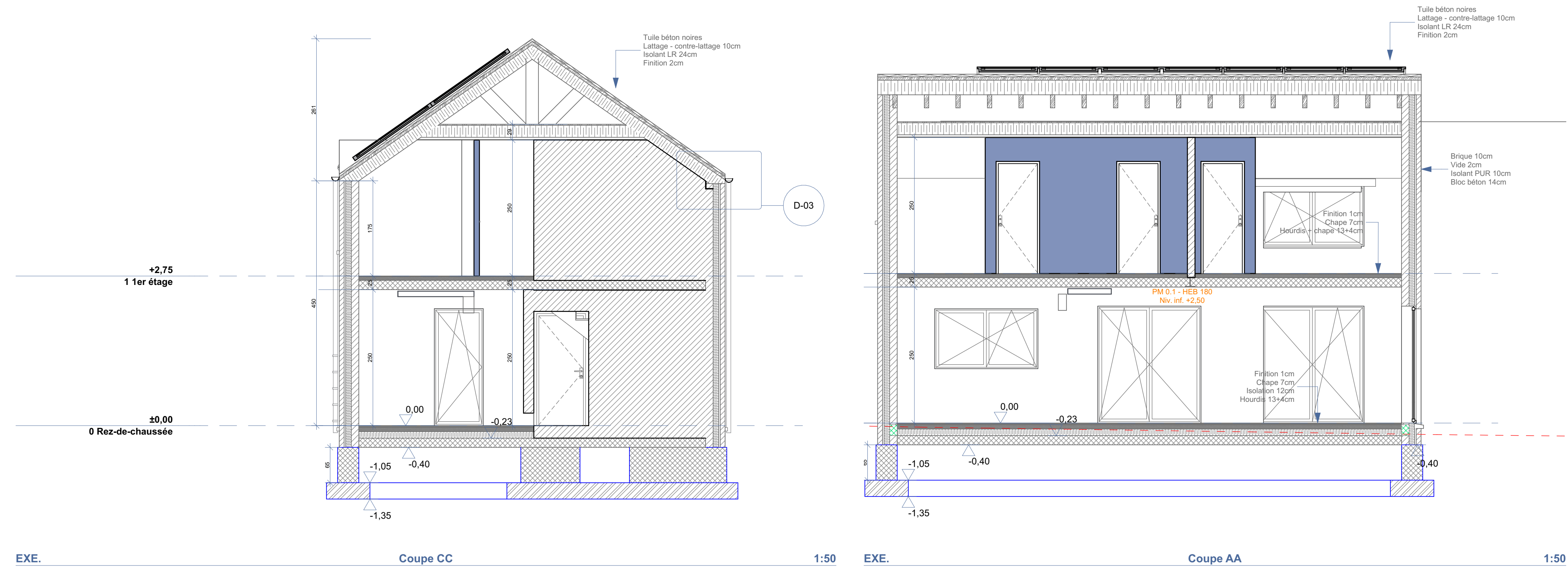


A



- Légende :**
- 1 - Parement en brique RAL Salvia
  - 2 - Couverture en tuile béton Sneldek noire
  - 3 - Appui de fenêtre/porte en pierre bleue
  - 4 - Menuiserie extérieure de teinte grise foncée
  - 5 - parement en brique brune
  - 6 - Gouttière et descente d'eau en zinc gris foncé
  - 7 - Panneaux photovoltaïques
  - 8 - Gravier
  - 9 - Herbe